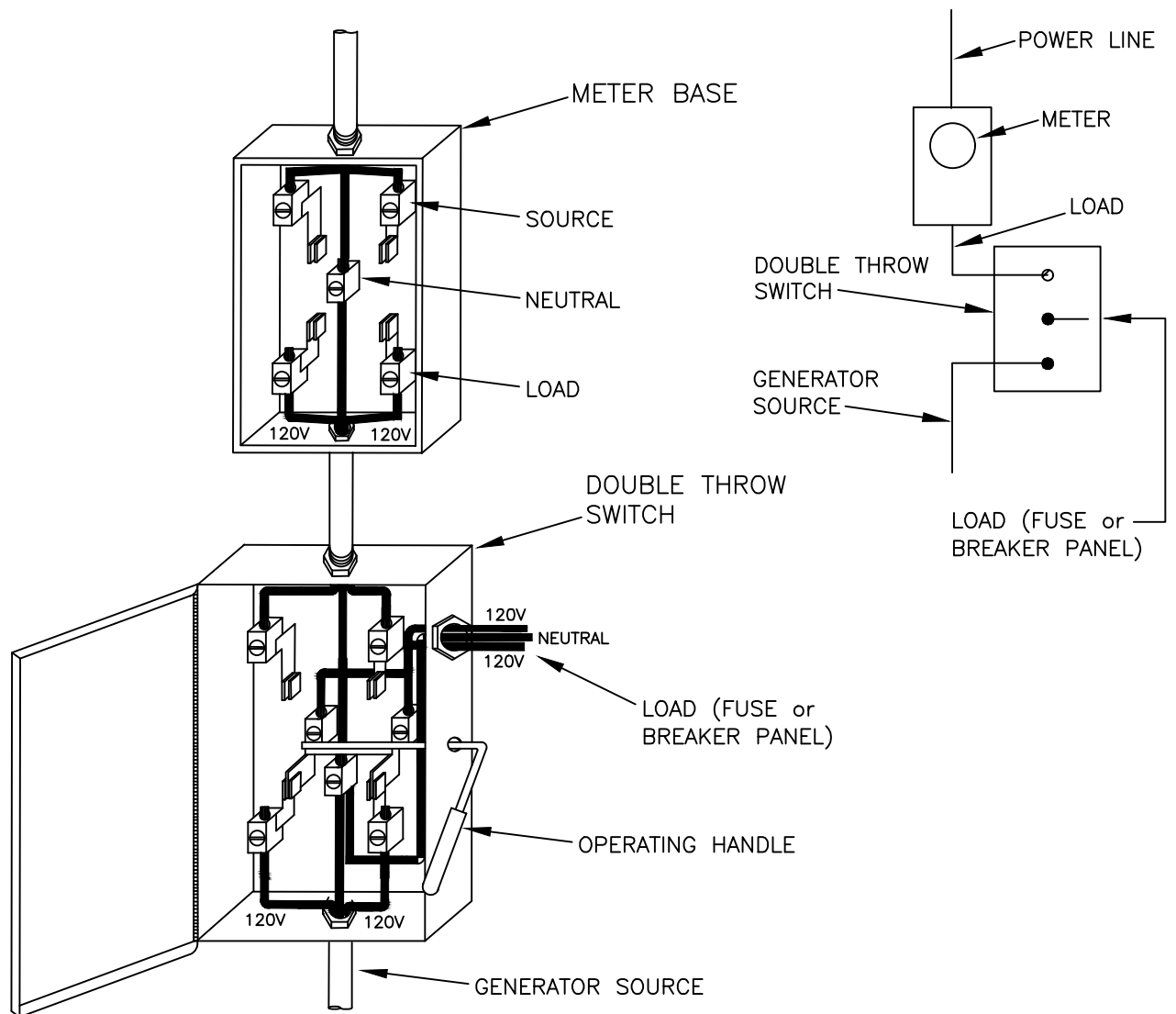


NOTES:

1. The stand-by generator shall be provided with transfer equipment for shifting from one source to another. This double-throw switch shall prevent the inadvertent interconnection of normal & alternate sources of supply. (2023 NEC 702.5)
2. The transfer equipment shall be permitted to contain supplementary overcurrent protection having an interruptible rating sufficient for the available fault current that the generator can deliver.
3. The stand-by generator shall be grounded in accordance with the (2023 NEC 250.30).
4. Rule-of-thumb sizing method for stand-by generator: (2-HP per kW of load)



ALL MATERIAL SHOWN ON DRAWING TO BE FURNISHED BY CUSTOMER UNLESS OTHERWISE NOTED.

DOUBLE-THROW SWITCH  
INSTALLATION GUIDE



Washington EMC

JUN 2023

WEMC

SECONDARY  
120/240 VOLT

K4.7G